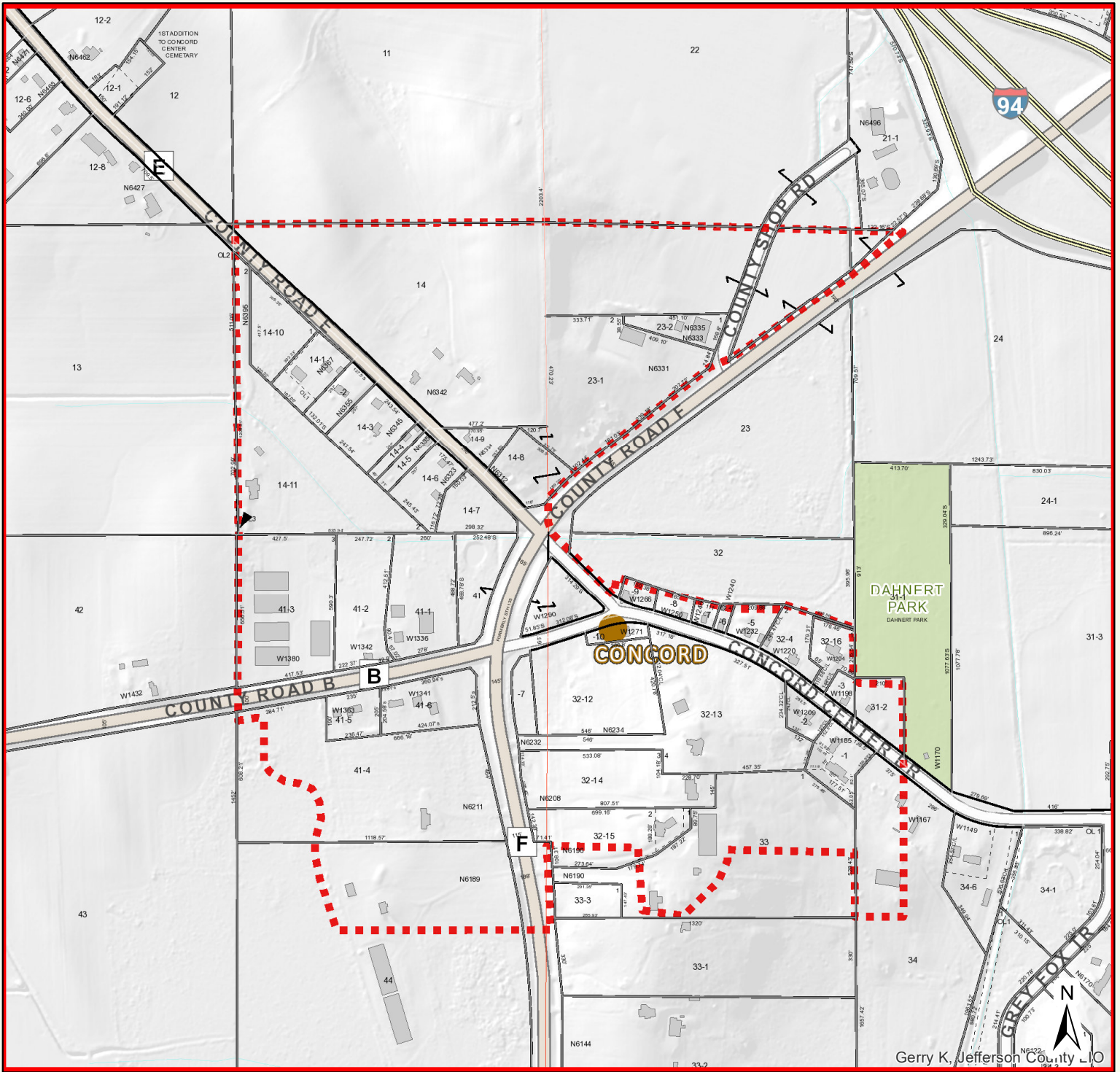
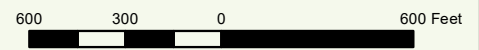


# Jefferson County Land Information



Gerry K, Jefferson County LIO

- |                     |                       |  |                    |  |               |
|---------------------|-----------------------|--|--------------------|--|---------------|
|                     | Description           |  | Rail Right of Ways |  | Tax Parcels   |
|                     | Municipal Boundaries  |  | Road Right of Ways |  | Rural Hamlets |
| <b>Parcel Lines</b> |                       |  |                    |  |               |
|                     | Property Boundary     |  | Section Lines      |  | Surface Water |
|                     | Old Lot/Meander Lines |  | Map Hooks          |  |               |



Jefferson County Geographic Information System

DISCLAIMER: This map is not a substitute for an actual field survey or onsite investigation. The accuracy of this map is limited to the quality of the records from which it was assembled. Other inherent inaccuracies occur during the compilation process. Jefferson County makes no warranty whatsoever concerning this information.

Printed on: March 17, 2022

Author: Public User